

JAMA Psychiatry

Research

Original Investigation

751 Atypical Cross Talk Between Mentalizing and Mirror Neuron Networks in Autism Spectrum Disorder

I Fishman and Coauthors

761 Stress-Induced Increase in Kynurenic Acid as a Potential Biomarker for Patients With Schizophrenia and Distress Intolerance

J Chiappelli and Coauthors

769 Medial Temporal Lobe Structures and Hippocampal Subfields in Psychotic Disorders: Findings From the Bipolar-Schizophrenia Network on Intermediate Phenotypes (B-SNIP) Study

I Mathew and Coauthors

778 Variability in Working Memory Performance Explained by Epistasis vs Polygenic Scores in the *ZNF804A* Pathway

KK Nicodemus and Coauthors for the Schizophrenia Psychiatric Genome-wide Association Study (GWAS) Consortium and The Wellcome Trust Case Control Consortium 2

786 Effect of Prenatal Exposure to Tobacco Smoke on Inhibitory Control: Neuroimaging Results From a 25-Year Prospective Study

NE Holz and Coauthors

797 Brain Nicotinic Acetylcholine Receptor Availability and Response to Smoking Cessation Treatment: A Randomized Trial

AL Brody and Coauthors

806 Plasticity of Hippocampal Subfield Volume Cornu Ammonis 2+3 Over the Course of Withdrawal in Patients With Alcohol Dependence

S Kühn and Coauthors

812 Risky Decision Making, Prefrontal Cortex, and Mesocorticolimbic Functional Connectivity in Methamphetamine Dependence

M Kohno and Coauthors

821 The Changing Face of Heroin Use in the United States: A Retrospective Analysis of the Past 50 Years

TJ Cicero and Coauthors

827 Brain Structure and Functional Connectivity Associated With Pornography Consumption: The Brain on Porn

S Kühn and J Gallinat

Opinion

Viewpoint

745 National Institute of Mental Health Clinical Trials: New Opportunities, New Expectations

TR Insel and N Gogtay

747 Combined Pharmacotherapy and Psychotherapy in the Treatment of Mild to Moderate Major Depression?

P Cuijpers

Editorial

749 Distress Intolerance, Kynurenic Acid, and Schizophrenia

DC Javitt

Clinical Review & Education

Neuroscience and Psychiatry

835 Synaptic Health

JH Morrison and MG Baxter

Continuing Medical Education

844 Online CME Quiz Questions

LETTERS

Research Letter

838 Prevalence of N-Methyl-D-Aspartate Receptor Autoantibodies in the Peripheral Blood: Healthy Control Samples Revisited

J Steiner and Coauthors

Comment & Response

839 Rehabilitation and Causes of Premature Mortality in Patients With Traumatic Brain Injury

HUMANITIES

Art and Images in Psychiatry

742 *The Dying Seneca*: Peter Paul Rubens

JC Harris

Issue Highlights and Continued Contents on page 727



ORIGINAL RESEARCH

e450 Clinical Staging in Bipolar Disorder: Focus on Cognition and Functioning
Adriane R. Rosa, Pedro V. S. Magalhães, Letícia Czepielewski, Miréia Viana Sulzbach, Pedro D. Goi, Eduard Vieta, Clarissa S. Gama, and Flávio Kapczinski

META-ANALYSIS

e424 Pharmacologic and Behavioral Interventions to Improve Cardiovascular Risk Factors in Adults With Serious Mental Illness: A Systematic Review and Meta-Analysis
Jennifer M. Gierisch, Jason A. Nieuwsma, Daniel W. Bradford, Christine M. Wilder, Monica C. Mann-Wrobel, Amanda J. McBroom, Vic Hasselblad, and John W. Williams Jr

e441 Meta-Analysis of Selective Serotonin Reuptake Inhibitor-Associated QTc Prolongation
Scott R. Beach, William J. Kostis, Christopher M. Celano, James L. Januzzi, Jeremy N. Ruskin, Peter A. Noseworthy, and Jeff C. Huffman

FOCUS ON CHILDHOOD AND ADOLESCENT MENTAL HEALTH

e457 Psychiatric Comorbidity in Hospitalized Adolescents With Borderline Personality Disorder
Carolyn Ha, Jessica C. Balderas, Mary C. Zonarini, John Oldham, and Carla Sharp

BOOK REVIEWS

e465 Bipolar II Disorder: Modelling, Measuring and Managing, 2nd ed

e466 Schizo-Obsessive Disorder

ONLINE ACTIVITIES

- e11 Translating Clinical Science Into Effective Therapies [CME] [Free Online]**
Michael E. Thase
- e12 Monitoring Pharmacotherapy Response, Safety, and Tolerability to Enhance Adherence in Bipolar Disorder [CME] [Free Online]**
Paul E. Keck, Jr
- e13 Obsessive-Compulsive Disorder in Youth: Assessment and Treatment [CME] [Free Online]**
Jennifer G. Wells

For All *Exclusives* Visit
PSYCHIATRIST.COM

Enter Keyword **ONLINE**

Scan



INFORMATION FOR AUTHORS

see www.psychiatrist.com/author.htm

Home of
The Journal of Clinical Psychiatry

Practical Psychopharmacology

Knowledge, tips, and discussion with
 Chittaranjan Andrade, MD.

Enter Keyword **PRACTICAL**

Publisher's Podcast

Audio summaries of the monthly *Journal*
 and individual articles.

Enter Keyword **PODCAST**

Multimedia Special Features

Dynamic video and interactive features
 to enhance learning.

Enter Keyword **MULTIMEDIA**

PsychsTalk Blog

Join the discussion! Share views and exchange
 insights with colleagues on current practice
 issues and more.

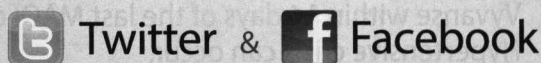
Enter Keyword **BLOG**

CME Opportunities

Earn free CME credit! *Journal* CME, supplements,
 and multimedia activities.

Enter Keyword **CME**

Stay Current—follow JCP daily on



Research

Stress-Induced Kynurenic Acid

761

Using a computerized task designed to be frustrating, Chiappelli and colleagues discovered that stress induces an increase in salivary levels of kynurenic acid, an endogenous neuromodulator with nicotinic and *N*-methyl-D-aspartate antagonist properties. Patients with schizophrenia who were unable to tolerate the task and quit early exhibited unusually elevated levels of salivary kynurenic acid, implicating the kynurenine pathway in the pathophysiological mechanism of stress in schizophrenia.

E Editorial 749

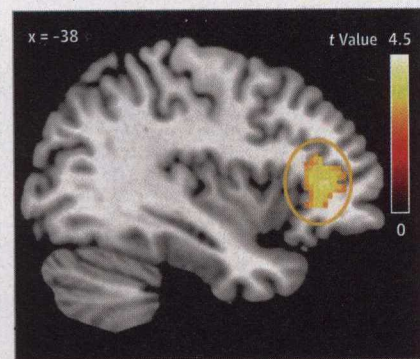
Medial Temporal Lobe and Hippocampal Subfields

769

Mathew and colleagues used high-resolution structural magnetic resonance imaging to quantify hippocampal subfield volumes across the psychosis spectrum. They reported reduced subfield volume most pronounced in the cornu ammonis 2/3, subiculum, and dentate gyrus among patients diagnosed as having schizophrenia, schizoaffective, or psychotic bipolar disorder. Furthermore, these subfield volumes correlated with positive symptoms as well as declarative memory, suggesting that hippocampus-related cognitive deficits may underlie the pathophysiology of psychosis.

Effect of Prenatal Exposure to Tobacco Smoke on Inhibitory Control

786



Using data from an epidemiological cohort study followed up since birth, Holz and colleagues reported that prenatal nicotine exposure resulted in weaker activation in the anterior cingulate cortex and the inferior frontal gyrus during inhibitory control as well as in decreased volume in the inferior frontal gyrus, despite controlling for various confounders. Activity was inversely related to lifetime attention-deficit/hyperactivity disorder in the inferior frontal gyrus and novelty seeking in the anterior cingulate cortex.

Hippocampal Subfield Volume CA 2+3 in Alcoholic Patients

806

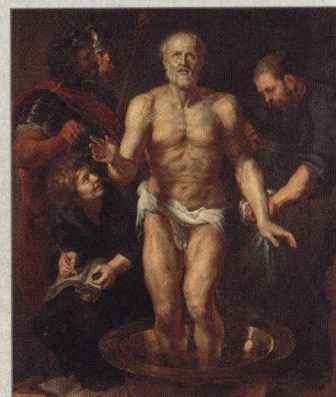
Kühn and colleagues showed neuroplasticity deficits in the hippocampal subfields cornu ammonis (CA) 2+3 of patients dependent on alcohol but not in healthy control individuals when comparing high-resolution structural magnetic resonance images acquired after withdrawal and 2 weeks later. The volume of cornu ammonis 2+3 in patients directly after withdrawal was negatively associated with years of regular alcohol consumption and more severe alcohol withdrawal symptoms.

Risky Decision Making in Methamphetamine Users

812

Kohno and colleagues examined the relationship between resting-state functional connectivity within the mesocorticolimbic system and sensitivity of regional activation to levels of risk during risky decision making in methamphetamine-dependent and healthy individuals. The groups differed in midbrain functional connectivity and sensitivity of activation in the dorsolateral prefrontal cortex and striatum during risky decision making.

Art and Images in Psychiatry



742 Peter Paul Rubens (1577-1640), *The Dying Seneca*, Flemish.

Opinion

Editorial

749 Distress Intolerance, Kynurenic Acid, and Schizophrenia
DC Javitt

840 Correction

Online@jamapsychiatry.com



Author Interview

AUDIO Interview with Ralph-Axel Müller, PhD, author of "Atypical Cross Talk Between Mentalizing and Mirror Neuron Networks in Autism Spectrum Disorder"

Departments

728 Staff Listing
821 CME Article
842 Classified Advertising
842 Journal Advertiser Index
843 Contact Information
844 CME Questions

Instructions for Authors

www.jamapsychiatry.com/public/instructionsforauthors.aspx